

PENTHOUSE COLLECTION

METROPOLIS • LOS ANGELES

RESIDENCE TWO

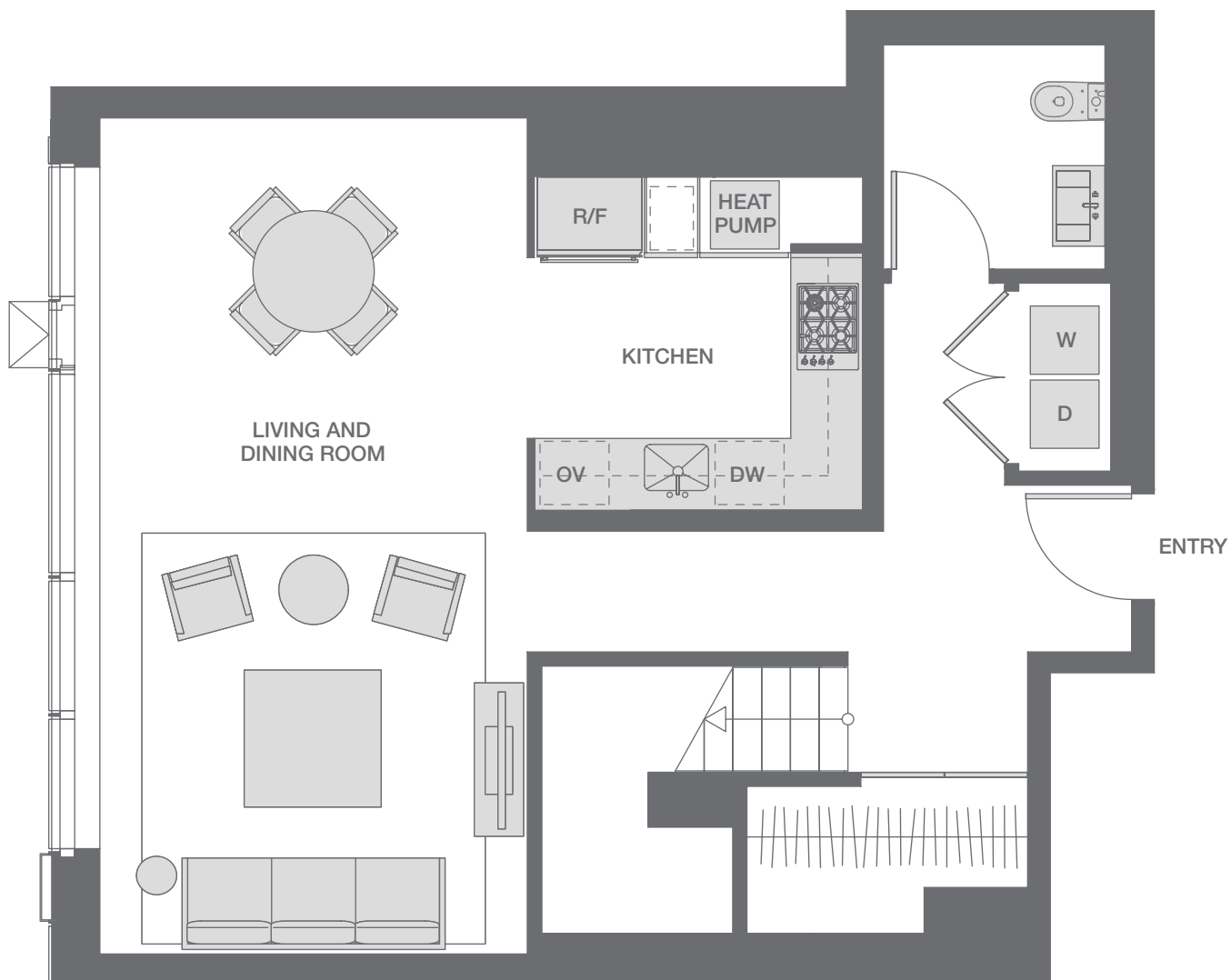
2 BEDROOMS, 2 BATHROOMS, POWDER ROOM
1,788 SQ. FT. / 166 SQ. MT.

RESIDENCE TWO

TWO-LEVEL PENTHOUSE
1,788 SQ. FT. / 166 SQ. MT.

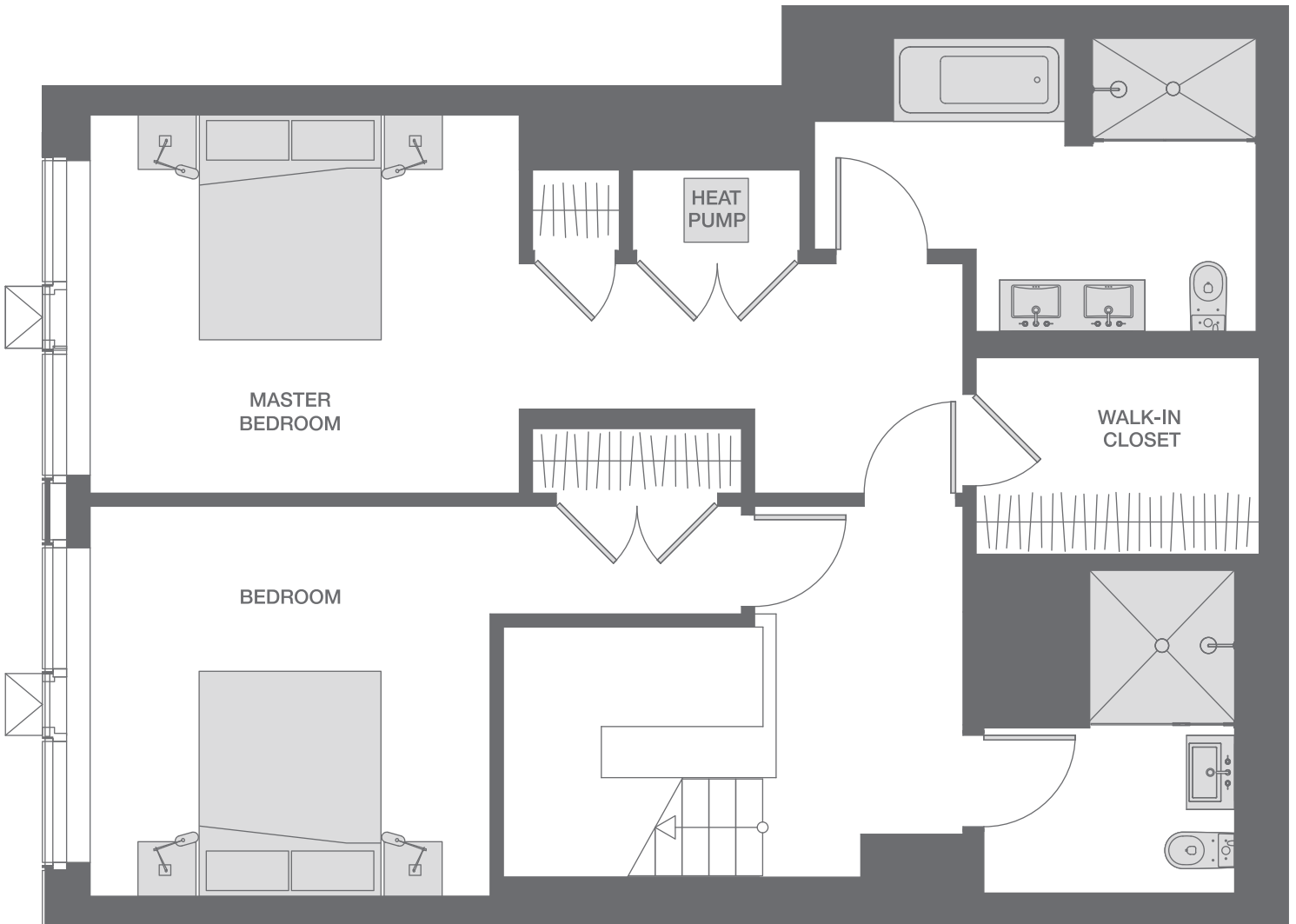
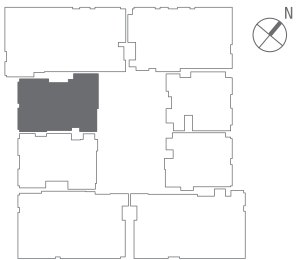
1ST LEVEL

808 SQ. FT. / 75 SQ. MT.



2ND LEVEL

980 SQ. FT. / 91 SQ. MT.





Sales Center:

777 S. Figueroa St. 47th Floor, Los Angeles, CA 90017

US (855) 657.8300 / Int'l +86 (400) 628.5588

www.MetropolisLosAngeles.com



ALL FLOORPLANS SHOWN ARE FOR ILLUSTRATIVE PURPOSES ONLY. FLOORPLANS MAY NOT DEPICT FINAL DESIGNS OF UNITS AS CONSTRUCTED. ROOM SIZES SHOWN, TYPICAL SQUARE FOOTAGES, SHAPE AND SIZE OF ROOMS, FURNITURE, CABINETS AND FURNISHINGS, AS DEPICTED, ARE APPROXIMATE, MAY NOT BE DRAWN TO SCALE, AND ARE FOR ILLUSTRATIVE PURPOSES ONLY. THE FINAL SIZE, SHAPE AND SQUARE FOOTAGE OF A UNIT ARE SUBJECT TO CONSTRUCTED MEASUREMENTS. ALL DIMENSIONS ARE APPROXIMATE, AND SUBJECT TO CONSTRUCTION VARIANCES. PLANS AND DIMENSIONS MAY CONTAIN MINOR VARIATIONS FROM FLOOR TO FLOOR. SELLER RESERVES THE RIGHT TO MAKE CHANGES AND MODIFICATIONS TO PLANS, MATERIALS, SPECIFICATIONS AND FEATURES WITHOUT NOTICE OR OBLIGATION.

THE UNIT TOTAL SQUARE FOOTAGES SHOWN ARE GREATER THAN THE ACTUAL NET USEABLE SQUARE FOOTAGE WITHIN THE UNIT. A PORTION OF THE TOTAL SQUARE FOOTAGE SHOWN FOR A UNIT FLOORPLAN IS COMMON AREA AIR SPACE OF THE BUILDING, INCLUDING COLUMNS, SHAFTS, INTERNAL WALLS AND OTHER UNUSABLE SPACE, OR IS LOCATED WITHIN THE PERIMETER WALLS OF THE UNIT, AND IS CALCULATED AS DESCRIBED IN THE CONDOMINIUM PLAN AND WERE MEASURED AS FOLLOWS: (1) FROM THE INTERIOR SURFACES OF GLASS WINDOWS AND DOORS, (2) FROM THE STRAIGHT LINE EXTENDING SUCH INTERIOR SURFACE BOUNDARY INTO THE WALLS AND COLUMNS ADJACENT TO SUCH GLASS; AND (3) FROM THE CENTER LINE OF BOUNDARY WALLS LOCATED BETWEEN ADJACENT UNITS, (4) FROM THE FACE OF THE BUILDING CORE ADJACENT TO THE BOUNDARY WALLS OF UNITS, AND (5) FROM THE INSIDE FACE OF THE DRYWALL ON THE HALLWAY SIDE OF UNIT WALLS ADJACENT TO HALLWAYS.

